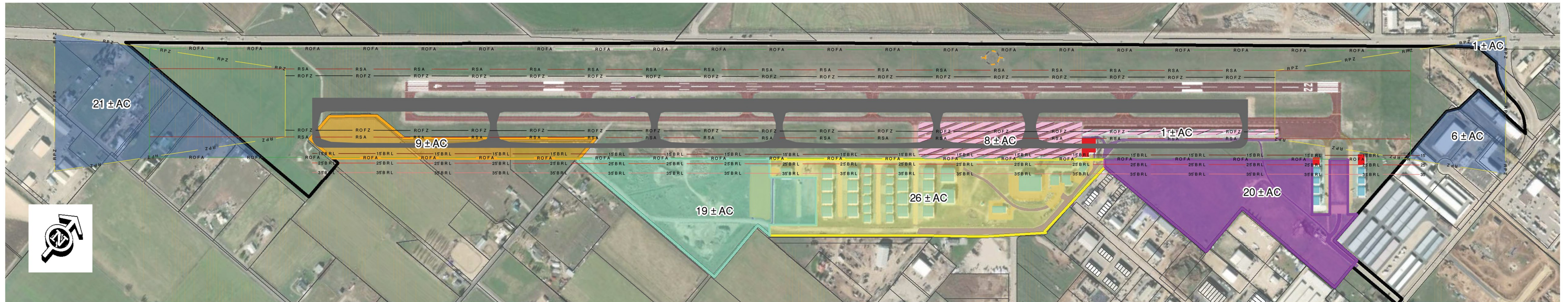


HEBER VALLEY AIRPORT









FLIGHTPATH

PLANNING A SHARED COURSE FOR OUR FUTURE

RUNWAY SHIFT TO SOUTHWEST



Runway Shift to Southwest
Runway length and width: 6,898' x 100'

Color	Land Area	Acres
	RPZ Protection (acquisition or easement)	est. 28
	Existing Developed Area Remaining	est. 26
	ROFA/Taxiway Acquisition	est. 9
	Buildings	to be relocated
	Ramp Area Hangar Row	est. 8 acre reduction est. 1 acre reduction
	Principal FBO Facilities (including Replacement of Displaced Facilities)	est. 19
	Limited Service FBO and/or Hangar Development area:	est. 20
	Runway/taxiway	to be relocated

ADVANTAGES

- Removes US 189 impacts/considerations
- Minimizes RPZ impacts on RWY 22 end
- Does not displace any residences on RWY 22 end
- Minimizes total land acquisition requirements
- Moves flight path away from downtown

DISADVANTAGES

- Two hangars on RWY 22 end would require relocation
- Requires Hangar Row to be relocated
- Removes most of the existing ramp space
- Reduces amount of land for economic development
- Impacts large acreage on RWY 4 end