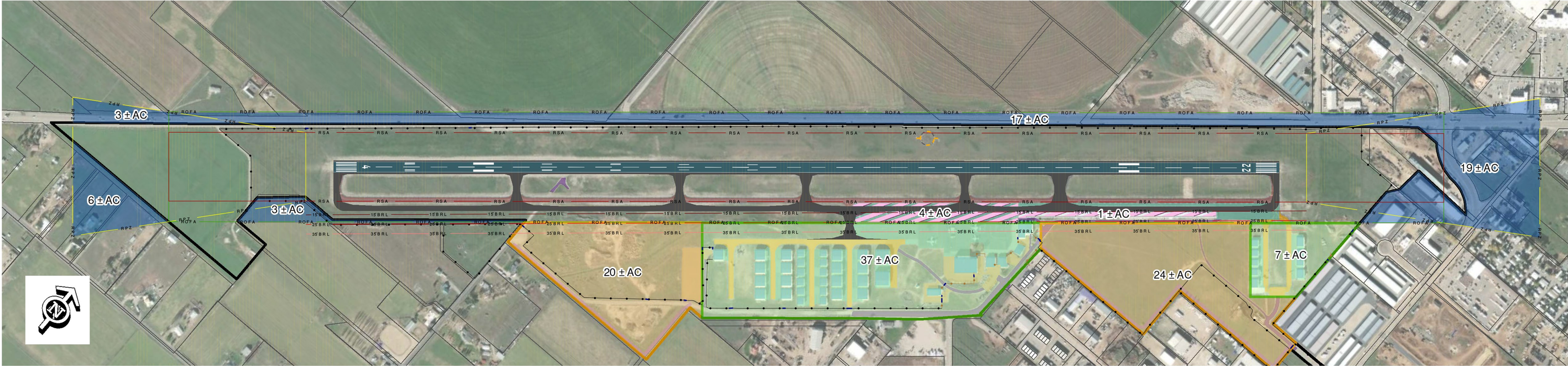







EXISTING LAYOUT WITH C-II STANDARDS IMPLEMENTED



EXISTING LAYOUT WITH C-II STANDARDS IMPLEMENTED

Runway length and width: 6,898' x 100'

Color	Land Area	Acres
	RPZ/ROFA protection (acquisition or easement)	est. 48
	Existing developed areas	est. 44
	Future developable areas	est. 44
	Taxiway to be relocated	
	Ramp Area Hangar Row	est. 4 acre reduction est. 1 acre reduction

ADVANTAGES

- Minimizes easements/land acquisition of private property
- Preserves around 44 acres of airport property for economic development
- Preserves majority of open ramp space

DISADVANTAGES

- Requires US 189 to be moved
- Requires intersection of US 189 and 1300 S to be moved
- Requires Hangar Row to be relocated
- Requires some reduction of ramp space
- Requires easement/land acquisition on both ends of runway
- Displaces significant number of residences on RWY 22 end